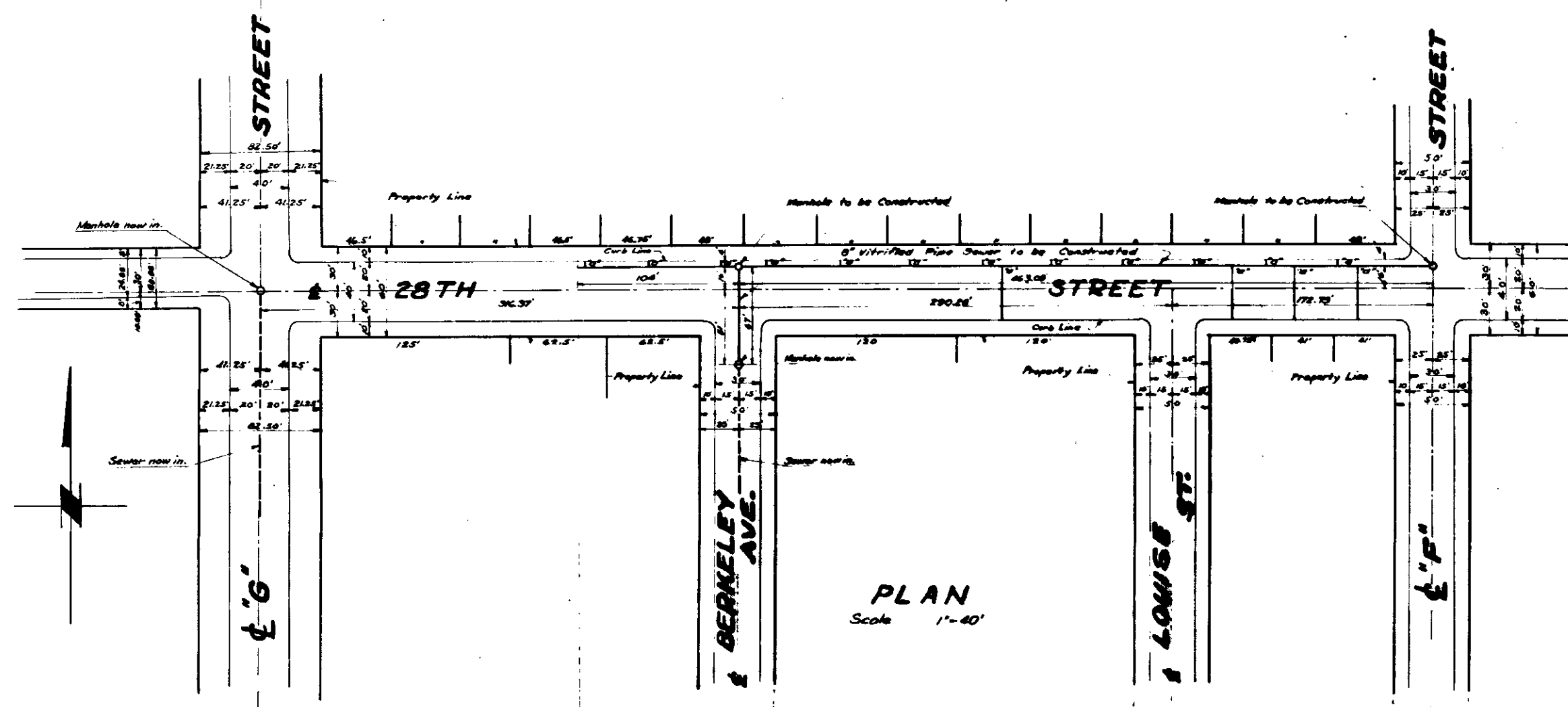


SHEET NO. 1
 PLAN NO. 1744
 FOR
28TH STREET SEWER
 BETWEEN
 "F" STREET AND "G" STREET
 CITY OF SAN BERNARDINO
 CALIFORNIA.

NOV. 1947. R. D. FORSYTH
Acting City Eng.
 Plan Adopted December 1, 1947



PLAN
 Scale 1"=40'

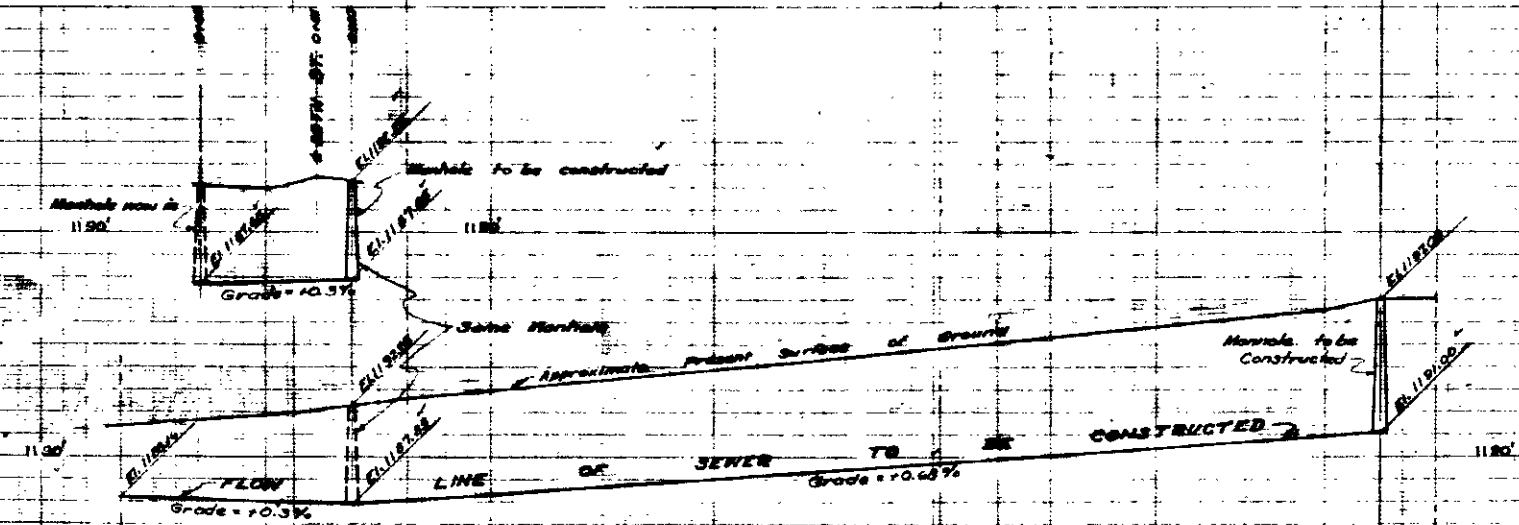
- LEGEND**
- " or in means inch or inches. St. means street.
 - ' or f means foot or feet. Ave. means Avenue.
 - N# means number.
 - CL means center line.
 - Ei. means elevation.
 - 5" Vitrified Pipe Sewer to be constructed, shown thus
 - 5"x4" Ryes with 4" connecting sewers to be constructed, shown thus
 - Manholes to be constructed, shown thus
 - Manhole now in, shown thus
 - 5" Vitrified Pipe Sewer now in, shown thus

- SEWER DETAIL**
- Lineal Ft. of 5" Vitrified Pipe Sewer to be constructed
 - Lineal Ft. of 4" Vitrified Pipe Sewer to be constructed
 - No. of 5"x4" Ryes with 4" connecting sewers to be constructed
 - No. of Manholes to be constructed

TITLE TO STREET
 28TH STREET, dedicated by Map of El Bello Tract
 Recorded, Book 24 of maps at Page 58 Records
 of San Bernardino County, California.

GRADE ORDINANCE
 Grade of 28TH STREET, established by
 Resolution No. 4 of the City of San Bernardino,
 Adopted 6-27-27.

DATUM
 All Elevations shown in Red ink are in feet and
 are above a plane, which is 1045.28 below the
 City Bench Mark, as established by Ordinance
 388 of the City of San Bernardino, California.



PROFILE
 Scale 1"=40' Horizontal - 1"=2' Vertical

- PROFILE LEGEND-**
- Approximate present surface of ground shown by Black Line thus
 - Flow Line of Sewer to be constructed shown by Red Line thus

NOTE: 5" Vitrified Pipe connecting Sewers shall be constructed on an upward grade of five percent from the main sewer, and shall extend from the main sewer to the Curb Line.